



**100<sup>TH</sup> YEAR ANNIVERSARY**  
*1910 - 2010*



On October 4, 1910, a group of General Electric engineers formed the Thomson Club. The club was named in honor of Dr. Elihu Thomson, a world renowned scientist who was also a co-founder of the General Electric Company. The original purpose of the club was to provide it's young engineers new to the area the opportunity to socialize with peers and to establish new friendships. After founding the club, they rented a room at the West Lynn Odd Fellow's Hall in order to provide a meeting place. They also held some meetings at 70 Moulton Street in Lynn, where some of the members lived at the time. But prior to 1913, the Thomson Club didn't own a permanent home.



Dr. Elihu Thomson



The year was 1913 when General Electric purchased the *Ashcroft* estate at 24 Baker Street in Lynn to provide a permanent place for these engineers. The estate was reconstructed into a clubhouse that provided meeting rooms and sleeping quarters for 19 men. The Thomson Club resided within these walls from 1913 to 1945.

Some would stay for months, others for years, but nobody stayed longer than Ray Moeller. He had been a resident of the Thomson Club for over 25 years. To many he became know as "Mr. Thomson Club".

In his own words: *"Living at the Thomson Club is much like having a bed in the center of a night club - a party practically every night. The men who have moved in and out of the club number in the hundreds. Some left to get married and found happiness in that state; others found it intolerable and returned to the Thomson Club wondering why they ever gave up such a carefree existence."*



In 1945 the Thomson Club was incorporated. Its charter stated: *"for the purpose of establishing and maintaining a club house and other facilities to provide for the physical, mental and intellectual development of its members and to cultivate and encourage athletic sports, games and other social activities and relaxation for its members, and of leasing, holding and disposing of real and personal property therefor".*



*The Thomson Club in Nahant*



In 1946, the club purchased the Nahant Tennis Club. The club paid \$15,000 for the building and approximately eight acres of land. This facility contained a spacious ballroom, dining room, cocktail lounge and living quarters for 16 men. While in Nahant, the Thomson Club was quite the center of social activities. They held frequent dances - both formal and semi-formal - costume parties on special occasions. Monthly smokers for men only were



very popular. Many events were scheduled monthly for the entire family to enjoy. Some of those events were family clambake's, family field day, Sunday evening family smorgasbord and the annual children's Christmas party.

As the membership grew during the post-war years, it became apparent that a need existed for a more modern facility that would provide greater recreational activities for the members, especially golf and swimming. The decision was made to sell the Nahant facility and the search for more land for a better facility was initiated.

1910

100<sup>TH</sup> YEAR ANNIVERSARY

2010

## HOW THE THOMSON CLUB CAME TO NORTH READING

In the late 1950's the Thomson Club formed a search committee to investigate sites suitable to satisfy the needs of the growing club. One of the original locations that the committee considered was a 100+ acre lot in Middleton, MA. This site, located opposite Richardson's Ice Cream property on Route 114, was only large enough for a nine-hole golf course, a clubhouse, pools and tennis courts.

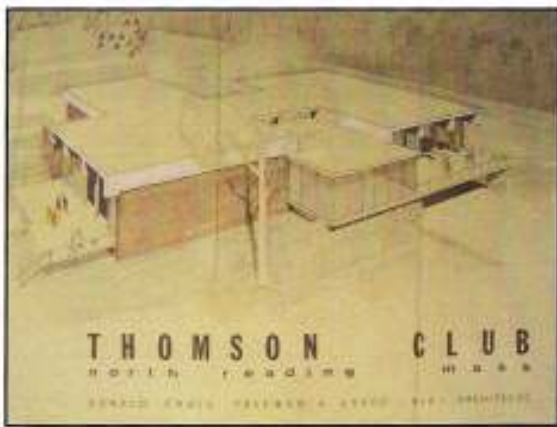
Prior to making the final decision on that piece of land, the committee was shown the present site at 20 Elm Street. Its 196 acres was sufficient to accommodate an 18 hole golf course. It also offered many hills and ponds suitable for such winter sports as skating, sledding and skiing. In fact, the original pro shop was built with a very large fireplace to act as gathering place for those enjoying such winter sports. The parcel's nearness to the Ipswich River also provided potential for the development of various water sport activities such as fishing and kayaking. While the North Reading site had much more potential, it was also the lower cost per acre (\$650 per acre vs. \$840 per acre for the Middleton site) that the committee found appealing.

Thus, when the committee recommended the North Reading site, the Board, on August 30, 1961, with an approval vote by the full membership, purchased the property.



### AN EARLY AERIAL VIEW

*The Ipswich River is barely visible at the top of this early aerial view of the Thomson Club property. To the right is an old ball field which now houses the driving range. Lower right was the original practice area where use was limited to 8 irons or less. Use was discontinued due to the danger to passing traffic. Left center is the old Robin Hood Day Camp, which is now Gillis Drive.*



Negotiations to buy the property involved three entities: Huntington Trust, Odelette and Arthur Deschenes and a Mr. Hutchison, an abutter who claimed ownership of some 6 acres located beyond the third green and the fourth tee. The six acres in question comprised mostly of wetlands so the Thomson Club chose not to contest Mr. Hutchison. He later donated the 6 acres to the Town of North Reading for conservation purposes.

The Deschenes property controlled the transaction. Their property ran north of what is now Haywood Farms, across the eleventh tee, the fourteenth green and northwest to about where Cleek Court is today. It only contained 15.8 acres but it essentially divided the Huntington Trust land in two. Without the sale of this lot, the golf course could not be built. A deal was struck and the Deschenes received \$13,000 for their land while the Huntington Trust received \$127,000. The total final acreage was 196, 172 acres on the golf course side and about 24 acres on the clubhouse side.

In November, 1961, ground was broken and construction of the new clubhouse complex was started. The building that was constructed consisted of two levels made up of reinforced steel and concrete blocks. It was constructed with large glass walls that provided excellent views of the property from the upper level ballroom and the lower level Dean Smalley Room.



1910

100<sup>TH</sup> YEAR ANNIVERSARY

2010



Over 1000 members and their wives attended the Grand Opening of the new Thomson Clubhouse on Friday, April 19, 1963. The ribbon-cutting ceremony included, from left to right: Mrs. J. Gibbons; Donald C. Freeman, Architect; Daniel Murphy, President of Arlington Trust Co.; Edwin E. Parker, Manager of GE Instrument Department; Warren H. Cushman, President of Thomson Club; Donald Roberts, Chairman of North

Reading Board of Selectmen; Jack Gibbons, Chairman of Thomson Building Committee; William A. Keyes, General Contractor of E.C. Blanchard Co., and Mrs. W.H. Cushman.



The new Thomson Club became very popular to it's members. The allure of this large new facility, in a country setting, was quite evident in the increasing number of members who participated in the many golf and social events held throughout the early years.

This group (from left to right: Dick Sakamoto, Alex Rotsko, saxophone; Bill Printup, drums; Jim Krecek, accordion; Joe Hearn, clarinet & Lou

Anastia, trumpet) provided music and entertainment in the Dean Smalley Room many times after Friday Night Scotches back in the late 1960's.

## CLUBHOUSE CHANGES OVER THE YEARS

While the exterior of the clubhouse has remained basically the same, the major exterior change over the years was the enclosing of the screened porch of the dining room which overlooked the pool. This was done to increase the overall seating capacity by approximately 50 seats. The dining room was expanded and bathrooms, as well as an elevator, also were installed. The added foundation footprint also allowed for more rooms downstairs, one of which has become the very popular card room.

The ballroom originally had painted concrete block walls which presented a very Spartan-like atmosphere. However, in the 1980's, with member participation and Ben Swopes, noted interior designer overseeing the project, the walls were sheetrocked, taped, painted and wallpapered. Other much needed renovations were accomplished in the early 2000's. Those included enlarging the office areas and the complete renovation of the main lobby. Also the parking lot was resurfaced and the lounge bar was redesigned. A horseshoe-shaped bar was installed in the Dean Smalley room, aka the Grill Room, the men's locker room was completely remodeled, the director's room was made into a bridal room, much needed pool repairs were accomplished, a kiddies' pool was installed and the pool bathrooms and the pool's snack bar area were modernized.



*Men's Locker Room*



*Main Lobby*



*Enclosed Porch Area*



*Dean Smalley Room  
(aka The Grill Room)*

*That was then.....*



*An earlier picture of Thomson's cooks and waitstaff*

*This is now.....*



*Some members of the current Thomson staff, from left to right: Joe Cormier, Charlene Kiley, Dan Murphy (Head Chef) Joao Silva, Madeline Briand, Vladimir Genao*





## THOMSON CLUB PRESIDENTS

1910 J.C. BERGER (TEMP.) CONE (6 MOS)	1957 JOSEPH V. LEMMOND
1911 J.C. BERGER (6 MOS) R. E. PLIMPTON	1958 CHARLES A. WOODMAN
1912 R.S. GILCREST (6 MOS)	1959 THOMAS E. GREEN
1923 REGINALD G. STANDERWICK	1960-61 J. RALPH HUGGETT
1924 C. S. GOGGERSHALL	1962-63 WARREN CUSHMAN
1925 REGINALD G. STANDERWICK	1964-65 J. INGELSON
1926 EDWARD V. POLLARD	1966-67 J. HEARN
1927 A. J. BENJAMIN	1968-69 R. RICHMAN
1928 J. L. KERR	1970-71 R. JAMES
1929 GEORGE W. CANN	1972-73 R. HENNESSEY
1930 NO RECORD	1974-75 R. HENNESSEY
1931 PAUL D. ROBINSON	1976-77 F. TOBIN
1932 PAUL D. ROBINSON	1978-79 F. TOBIN
1933 FRED B. HOMSBY	1980-81 F. TOBIN
1934 ROBERT E. ARNOLD	1982-83 W. STICKNEY
1935 JOHN J. O'ROURKE	1984-85 W. STICKNEY
1936 P.J. ROBINSON	1986-87 W. STICKNEY
1937 EDWIN R. GARDNER	1988-89 G. BEDROSIAN
1938 D.E. IRONS	1990-91 G. BEDROSIAN
1939 CARL H. ANDERSON	1992-93 B. SUTLIFFE
1940 FRED S. KOHL	1994-95 B. SUTLIFFE
1941 WILLIAM A. SMITH	1996-97 J. REGAN
1942 MARSHALL ANDERSON	1998-99 A. REGAN
1943 HOWARD C. DICKERSON	2000-01 L. FAY
1944 CHARLES F. BUCKLAND	2002-03 W. WEBB
1945 WILLIAM F. SLINE	2004-05 J. McHALE – W. WEBB
1946 FRED G. JUNKER	2006-07 F. BISOGNANO
1947 RUSSELL E. FRANCK	2008-09 J. McCARTHY
1948 JAMES K. NEWHALL JR.	
1949 CHALTON P. HALL	
1950 MAURICE W. HOFFMAN	
1951 JOHN J. SMIOLER	
1952 ROBERT E. LYON	
1953 JOHN R. MACINTYRE	
1954 JESSE E. NEESE	
1955 JOSEPH K. SIDEBOTTOM	
1956 CLIFFORD G. HANSON	



2010-11 JOE McCARTHY

\*IN 1962 THE TERM OF OFFICE WAS EXTENDED FROM A ONE YEAR TERM TO A TWO YEAR TERM  
NO RECORDS LISTING OFFICERS FROM 1912-1923.

1910

100<sup>TH</sup> YEAR ANNIVERSARY

2010

### 40+ YEAR CLUB MEMBERS

1961	A. ROTSKO
1962	G. & V. Essery
1963	B. KNIGHT S. MAGLIN J. OLIPHANT J. & K. REGAN B. & H. STICKNEY
1964	R. IRVING P. LANNON B. & B. LOCKE
1966	B. & P. COHEN
1968	H. TANNER
1969	D. SABOL
1970	N. & F. LEONE E. SHERMAN
1971	C. & H. DALEY F. & A. GUARINO D. & L. SMITH

### HONORARY MEMBERS

Clover, L. E.	Schenectady
Dunn, J. B.	Pittsfield
Kinnaed, I. F.	Boston
Newhell, J. K.	Louisville
Savage, C. J.	Scarsdale
Smalley, D. F.	Lynn
Stevens, G. M.	Marblehead
Trudinger, J.	New Hampshire
Whyte, T.G.	Florida
Bill Flynn	Danvers
Ray Hennessey	Swampscott
George Wemyss	Wakefield
Ann Marie Tobin	Lynnfield

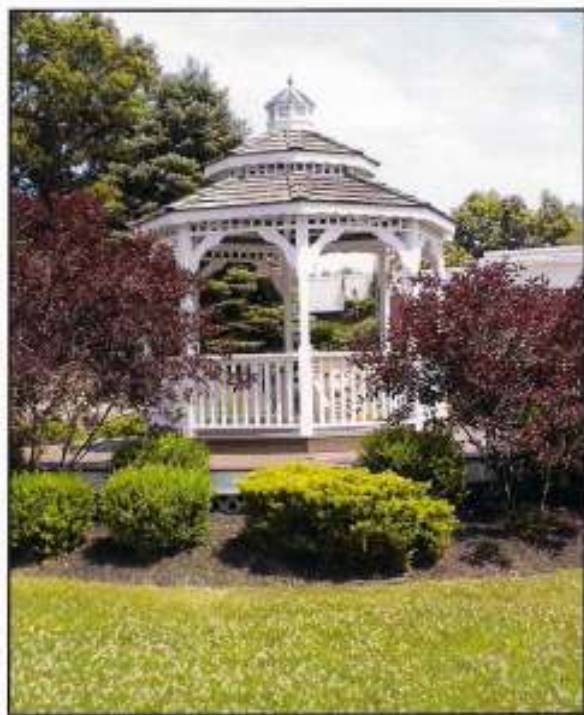
### 2010 BOARD MEMBERS

#### Officers

Joe McCarthy	President
Bob Gorton	Vice Present
Pat Furnari	Secretary
Joe Connolly	Treasurer
Ken Connell	Membership Secretary

#### Directors

Art Dunford	Tom Finocchio
Anthony Consoles	James Pearl
Bill Gagne	Charlie Hannon
Mike Kelly	Dominic Maitino



## GOLF COURSE CHANGES OVER THE YEARS

The golf course was designed by the noted golf course designer, Geoffrey Cornish, and the works were supervised by Frank Marchel, the first greens superintendent. The first nine holes (presently the back nine) open on May 30th 1963. The first foursome to play a round of golf was comprised of Bill Flynn (Golf Professional), Warren Cushman (Club President), Herb Chase (Greens Committee Chairman) and Harold Eisenhower (Committee Chairman). The second nine holes were complete for the 1964 golf season and thus, with the completion of all 18 holes, membership was offered to non G.E. personnel as "associate members".



*Bill Flynn*

In the beginning, construction priority was given to greens and tees. A watering system that serviced just these areas resulted in some of the best greens and tees in the area. However, the fairways would burn out in the hot summer sun, becoming very dry and dusty. To correct this situation wells were drilled but failed to provide enough water. It was not until the club installed a pump at the Ipswich River that the fairway conditions improved. The well drilled next to the Ipswich river provided the course with unlimited amounts of water. However, the amount of water that can be drawn from this well is now under control of the Ipswich River Commission and, in times of drought, is often restricted. The pond to the right of the first fairway was deepened to increase water storage capacity. The material that was dredged from the pond was used to raise the fairway on the third hole.



*Golf trips to warmer locations during the winter months were very popular to many of Thomsons' members. Here is a picture of Bill Flynn, Thomson's Head Golf Professional, from 1961 - 1986, on a golf trip in Bermuda with Ray Hennessey, club President 1974 - 1975, and Frank Tobin, first non G.E. President from 1976 - 1981.*

The golf course, since its initial design, has always been very narrow, with very heavily wooded areas bounding the fairways. In the early 1980's, financial conditions prompted the sale of the golf course land for the development of The Greens, a condo development. The sale enabled the club to regain financial stability. With the construction of The Greens, the wooded areas needed to be defined by out of bounds stakes. Some of the other changes to accommodate The Greens housing development were:



- The first fairway, which originally ran down what is now Mid Iron Drive for approximately 200 yards, was moved to what was the practice fairway.
- The tee on the second hole was moved up 20-30 yards.
- The eighth tee was originally located on a hill adjacent to the seventh green. Moving the tee resulted in a loss of 60-70 yards.
- The eleventh tee was also shorten slightly.
- The original fourteenth blue tee has been abandoned for safety reasons.



*The very narrow par 3 seventh hole.*



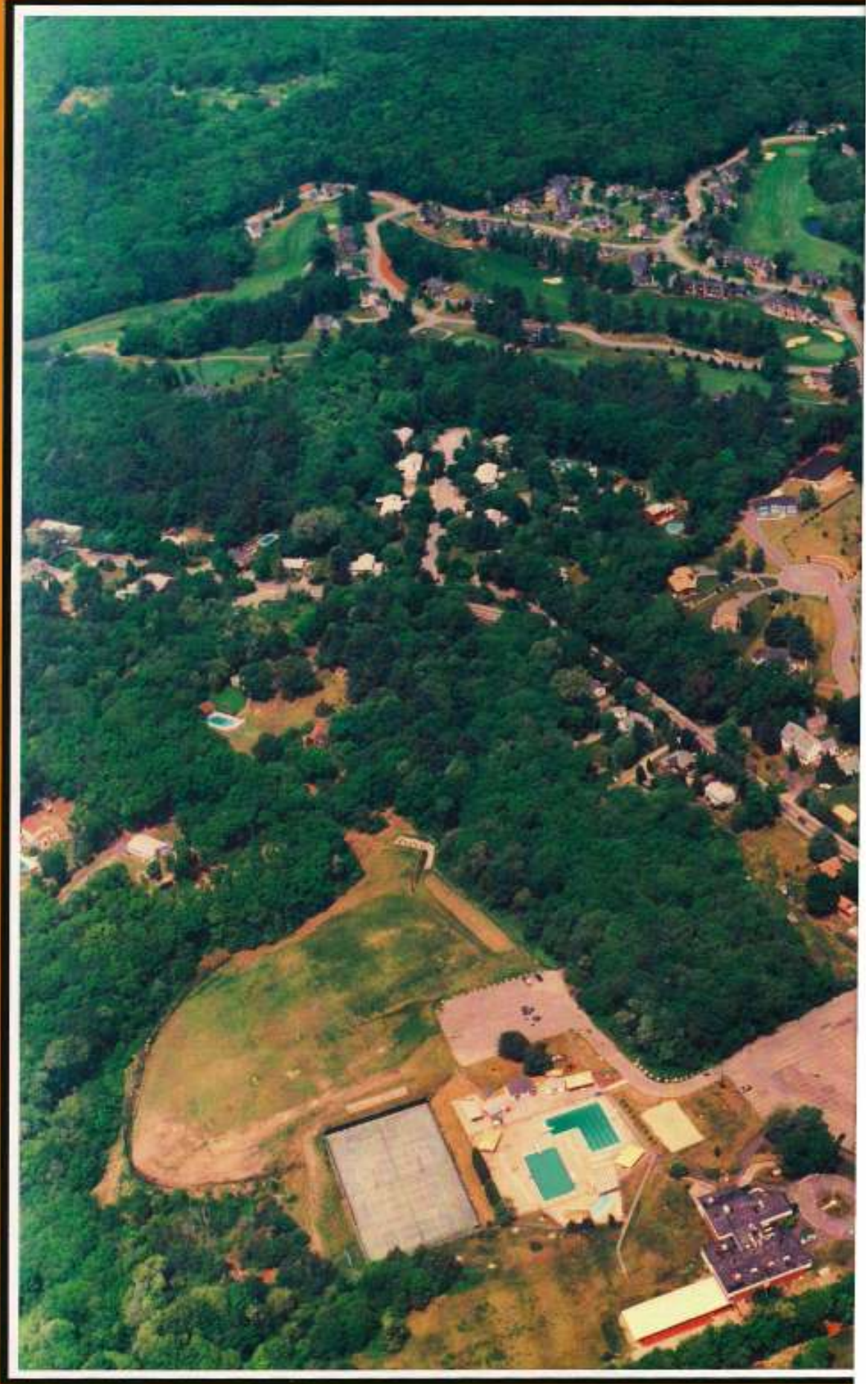
*The second hole is not that much wider.*



*View from the seventh tee overlooking the fourth and sixth green.*



*The Greens street map*







# That was then.....

**E. S. G. A. RULES GOVERN PLAY**

**LOCAL RULES**


**Out of Bounds**

**Water Hazards**

*Permittee Your Golf Shop*

**M-M**

**The Thomson Country Club**  
NORTH READING, MASS.




Established 1963

BILL FLYNN, Professional

REPLACE DIVOTS						LET FASTER PLAYERS PLAY THROUGH					
Hole	1st	2nd	3rd	4th	5th	Hole	1st	2nd	3rd	4th	5th
1	806	477	444	5	3	10	344	312	299	4	12
2	404	382	354	4	7	11	312	299	232	4	14
3	295	274	258	4	13	12	217	198	163	3	16
4	162	162	137	3	17	13	371	358	325	4	10
5	378	361	347	4	11	14	495	471	425	5	6
6	394	370	341	4	5	15	428	421	395	4	8
7	184	171	148	3	15	16	550	514	479	5	2
8	470	462	438	4	9	17	168	152	137	3	18
9	564	538	470	5	1	18	495	413	395	4	4
<b>Out</b>	<b>3361</b>	<b>3197</b>	<b>2893</b>	<b>34</b>		<b>In</b>	<b>3354</b>	<b>3138</b>	<b>2831</b>	<b>36</b>	
<b>Players</b>						<b>Date</b>	<b>Out</b>	<b>3261</b>	<b>3197</b>	<b>2893</b>	<b>36</b>
1							<b>79</b>	<b>6715</b>	<b>6335</b>	<b>5724</b>	<b>73</b>
2											
3											
4											

# This is now.....



**100% Water Obstacle Play**

**Local Rules**

- Out of Bounds defined by white stakes and steel fence. A ball which crosses a public road and comes to rest beyond that road is out of bounds, even though it may be on another part of the golf course.
- Obstacles in bunkers are movable obstructions 20-0.
- Balls which are immovable obstructions 20-0.
- Relief may be taken from water in your own strategy 20-0.
- Relief from sand traps 20-0 (original, original rules, sand traps).

**Thomson C.C.**  
founded 1963

30 ELIZABETH  
North Reading, MA 01861  
978-884-0318

**Country Club**  
Head Golf Professional

**GCSA**  
The Green Superintendents

Blue Tee	311	272	285	304	279	287	285	288	284	277	Red Tee	289	285	282	280	285	272	281	282	280	274	278	277
White Tee	287	272	279	281	280	284	271	270	271	267	Black Tee	287	272	279	281	280	284	271	270	271	267		
Handicap	1	2	3	4	5	6	7	8	9	10	Handicap	1	2	3	4	5	6	7	8	9	10	11	12
Par	4	4	4	4	4	4	4	4	4	4	Par	4	4	4	4	4	4	4	4	4	4	4	4
Hole	1	2	3	4	5	6	7	8	9	Out	10	11	12	13	14	15	16	17	18	In	Out	Net	
Par	4	4	4	4	4	4	4	4	4	21	4	4	4	4	4	4	4	4	4	4	21	21	
Handicap	1	2	3	4	5	6	7	8	9	21	1	2	3	4	5	6	7	8	9	21	21	21	
Red Tee	289	285	282	280	285	272	281	282	280	274	289	285	282	280	285	272	281	282	280	274	289	285	282

The top scorecard is an original scorecard printed before The Greens condo development. The overall length of the course was decreased by about 200 yards.

The original pro shop, also known as the Francis J. Tobin building, was constructed with a very large fireplace designed to provide a warming area for those participating in winter sports. However, in 1981 it was destroyed by fire. The present pro shop was rebuilt by the condo developers. The fireplace was eliminated and the original cathedral ceiling was lowered to provide for a partial second floor for storage.



*Thomson Country Club Pro Shop*

Some other free-standing structures also have been recently added. One is the scoreboard shed which was put in place in 2003. In 2007, a Turn House, also known as the Snack Shed, also was put in place across from the pro shop, offering a variety of foods and cold beverages.



*Turn House / Snack Shed*



*Scoreboard Shed*

In 2010, the Thomson Country Club went green by replacing its gas-powered golf carts with newer, more ecofriendly electric carts. The reduction in pollution and noise was well received by all, especially the residents of The Greens.



*Electric Golf Cart*





*Golfers gathered around the scoreboard shed during the 2010 Thomson 3-Day Invitational*



Pictured above are some of the amazing women volunteers who help make the Thomson 3-Day a huge success.  
*Left to right; Brenda Lane, Ginger Barrett, Debbie Proper & Jan Fee.*



*Dennis Leone & Joe Supino checking and posting scores inside the scoreboard shed.*



*Some of Thomsons' members, Stephen Miscowski and Paul Dobie, with their guests during the 2010 Thomson 3-Day Invitational.*



*2010 Men's Club Champion Sean Andrews.*



*2010 Women's Club Champion Joy Santoro*



*Margie Segel  
2010 Women's  
9-hole Champion*

*Lisa Stone  
Runner-up*



*Sean Andrews, with his caddie Bob Gorton, surveys his lie during his 36-hole Club Championship finals match against Brian O'Hanley.*



*Club Professional Tim Talbot explaining a ruling during the 2010 Club Championship semi-finals to Brian O'Hanley, while his opponent, Kristen MacDonald, looks on.*



### WOMEN'S GOLF CHAMPIONS

1964 Mary Silvers	1987 Mary Locke
1965 Mary Silvers	1988 Madeline Alford
1966 Sally Hammerbeck	1989
1967 Patrice Hartzell	1990 Cynthia Clearly
1968 Lillian Thompson	1991 Cynthia Clearly
1969 Patrice Hartzell	1992 Paula Bdiwi
1970 Phyllis Gonet	1993 Mary Locke Snow
1971 Patrice Hartzell	1994 Brenda Lane
1972 Jackie Reeves	1995 Sandy Radochia
1973 Sally Hammerbeck	1996 Janice Lamb
1974 Mary Silvers	1997
1975 Ann Marie Locke	1998
1976 Madeline Alford	2000 Janice lamb
1977 Ann Marie Locke	2001 Brenda Lane
1978 Ann Marie Locke	2002 Sandy Radochia
1979 Ann Marie Locke	2003 Sandy Radochia
1980 Madeline Alford	2004 Michelle Feld
1981 Mary Locke	2005 Janice Lamb
1982 Mary Locke	2006 K. MacDonald
1983 Mary Locke	2007 Michelle Feld
1984 Madeline Alford	2008
1985 Madeline Alford	2009 K. MacDonald
1986 Madeline Alford	2010 Joy Santoro

### MEN'S GOLF CHAMPIONS

1963 A. Sullivan	1987 R. Dyer
1964 C. Thyberg	1988 J. Rocha
1965 G. Regan	1989 B. Seabury
1966 C. Thyberg	1990 B. Webb
1967 A. Sullivan	1991 N. Frazer
1968 A. Sullivan	1992 M. McKenna
1969 A. Sullivan	1993 S. Guild Jr.
1970 J. Dieckelman	1994 S. Guild Jr.
1971 A. Sullivan	1995 F. Atherton
1972 J. Tobin	1996 J. McHale
1973 N. Frazer	1997 N. Frazer
1974 N. Leone	1998 K. Daly
1975 P. Twomey	1999 K. Daly
1976 N. Frazer	2000 M. Kuzara
1977 T. McDonald	2001 K. Daly
1978 N. Frazer	2002 K. Daly
1979 R. Pacquet	2003 K. Daly
1980 R. Pacquet	2004 D. Petruzzelli
1981 T. Frazer	2005 K. Daly
1982 N. Frazer	2006 D. Petruzzelli
1983 T. McDonald	2007 K. Daly
1984 J. Hart	2008 T. Finocchio
1985 B Seabury	2009 M. Bisognano
1986 N. Frazer	2010 S. Andrews

### WOMEN'S NINE-HOLE CHAMPIONS

2006 Kathy Connelly  
 2007 Kathy Connelly  
 2008 Kathy Connelly  
 2009 Joann Supino  
 2010 Margie Segel

1910

100<sup>th</sup> YEAR ANNIVERSARY

2010



*Tim Talbot*

**GOLF PROFESSIONALS**

1961-1986 Bill Flynn  
1987-1999 C. Frithsen  
2000-2006 W. Heintzelman  
2007-Present Tim Talbot



*Tedd Perry*

**GREENS SUPERINTENDENTS**

Frank Marshall  
Leo Brown  
Ray Woodbury  
Al Singer  
Karl Heintzelman  
Tedd Perry



*Pro Shop Staff, from left to right, Trevor Fuller, Assistant Professional; Chris Young Assistant Professional and Sean Maxwell, Hospitality Manager.*



*John Wiley  
Clubhouse Manager*



*Dee Tibbetts, Kristina Aloisi &  
Christine Danas, Office Manager*



*Bill Gagne, Controller & Kenton  
Benloss, Assistant Clubhouse  
Manager*

## POOL AND TENNIS AT THE THOMSON CLUB



In November, 1961, as part of the clubhouse complex, work was started on the pool and tennis courts and was completed in 1963. There were three pools, one L shaped, one rectangular, both Olympic sized, with depths from 3 feet to 12 feet, and a smaller kiddies' pool. At the time of construction it was considered to be the largest pool complex in New England. The two larger pools were heated. The L-shaped pool had two diving boards, one 10 feet high and the lower one approximately five feet high. The original bath houses and utility buildings were temporary structures, shaped as geodesic domes placed on octagon shaped concrete pad. Within a few years they were replaced with the three structures in use today. The cost of heating the pools proved to be too high and soon the heating equipment was removed. The use of the diving boards also fell victim to the high cost of insurance and were removed. In the early 2000's major renovations and repairs were made to the two larger pools and a newly designed kiddies' pool was built. The exteriors of both bath houses and the utility shed were done over with vinyl siding, the interiors painted and some new fixtures installed. A section of the utility shed was also converted to a snack bar. To provide relief from the hot sun temporary shelters were erected. These have since been replaced with other structures and tents.



*Thomson's Kiddie Pool*





While in Nahant, the Thomson Club had four clay surfaced, night-lighted tennis courts. It was the most popular sport at the club at that time. But it wasn't the only sport. Back in the early 1950's, the Thomson sponsored teams in basketball, skiing, softball, bowling, volley ball, touch football, swimming, ping-pong and even mountain climbing.

Originally, four tennis courts were built next to the pool and clubhouse at the North Reading site. Of the four, two were clay surfaced and one was lighted for evening play. The other two were asphalt covered. In 1972, when tennis was quite popular, the two asphalt courts were replaced with clay surfaces and four additional courts were added. However, when interest waned and maintenance costs increased the additional courts were removed.



*Stephanie Salisbury  
Pool Director*



*Pool Staff  
Front; P. Burdett, B. O'Neil, K. Phelan  
Rear; S. Sutherland, C. Garlow*



# Thank You

Special thanks to Alec Rotsko and Richard Gerardi for their contribution of historical data and pictures. Kristina Aliosi for her help with typing, Ed Doherty for his help in proofing, Charlie Daley for his research on the 40+ member club, Christine Danas for her help in putting all the pieces together and Steve Imbriano for designing and printing this book. The committee would also like to thank all of those individuals who contributed newspaper articles, postcards & pictures. Much of the material in this booklet was researched, filmed and compiled by Bill Locke.



## 100<sup>TH</sup> YEAR ANNIVERSARY COMMITTEE

JOE MCCARTHY - PRESIDENT  
CO-CHAIRMAN - BILL LOCKE  
CO-CHAIRMAN - JOE SUPINO

JAN FEE  
DIANE HINCKLEY  
NATALIE SALADINO

JOHN WILEY - CLUBHOUSE  
TIM TALBOT - GOLF  
CHARLES HANNON - POOL & TENNIS

**Note:** Historical material for the first fifty years has been taken, verbatim, from the commemorative issue entitled "The Thomson Talker", published in 1960. Newspaper clippings and photos furnished by Dick Gerardi form the basis for "How the Club Came to North Reading". Descriptions of the club's history from 1963 to the present time come mainly from conversations with long-time club members. Facts and figures presented in this book have been checked to the extent permitted by existing records. In many instances the records were non-existent and we had to rely upon the memory of knowledgeable individuals. If we made errors, well, we apologize.

1910

100<sup>TH</sup> YEAR ANNIVERSARY

2010